

Trail Rules

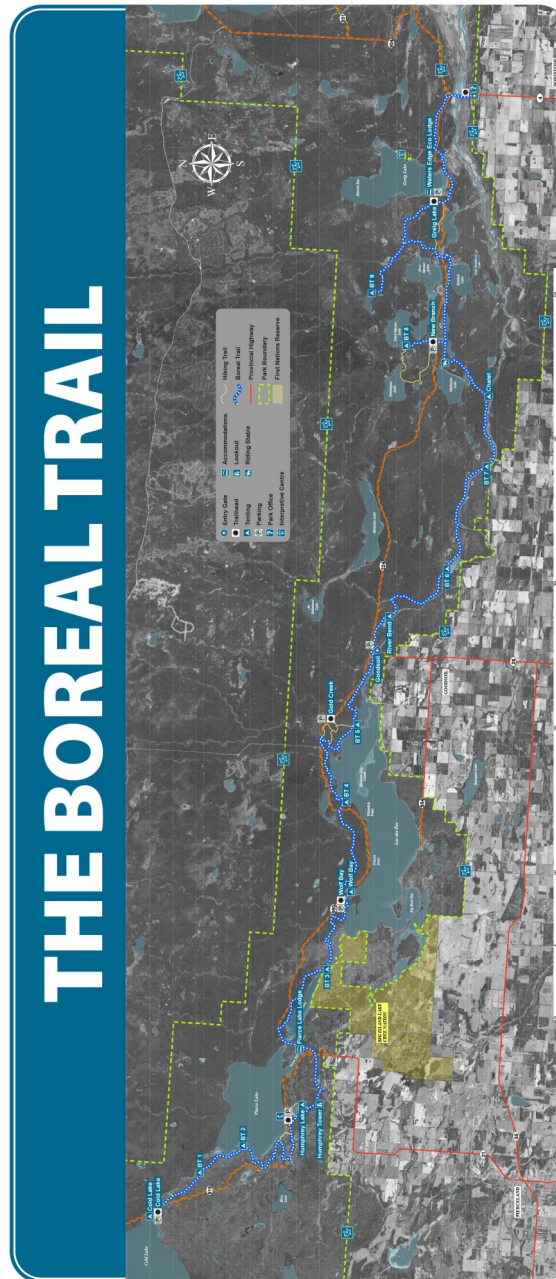
All Hikers Must Check IN/OUT

Call 1-306-236-7680

Please leave a message if calling outside office hours.

1. **Stay on Trail:** Stepping off the trail can cause damage to small plants and hidden animal homes.
2. **Be Prepared:** Bring along a backpack with water, a snack and other equipment in case of an emergency.
3. **Leave No Trace:** Do not leave anything behind. The trail should look as though you were never there.
4. **Be respectful to wildlife:** This is their home, not ours. If you encounter wildlife on the trail be sure to keep your distance and give them space.
5. **Leave it alone if you don't know what it is:** There are some plants, berries and mushrooms in the forest that are poisonous and should be avoided.
6. **Don't touch baby animals:** Animal Mothers will often hide their young in the bush or tall grass. It's mother will come back for it.
7. **Be considerate of other trail users.**

THE BOREAL TRAIL



Ministry of Parks, Conservation and Forestry
All users of Parks, Conservation and Forestry facilities are responsible for the safety of their own party.
Saskatchewan Parks, Conservation and Forestry does not accept liability for any injury or loss of property.
Saskatchewan Parks, Conservation and Forestry is not responsible for any damage to property or loss of life.
Review of Parks & Forestry facilities is ongoing and subject to change without warning.

Park Watch: 1 800 667-1788
saskparks.com

Meadow Lake Provincial Park Hiking Trails Murray Doell & Gold Creek



Meadow Lake Provincial Park

www.saskparks.com

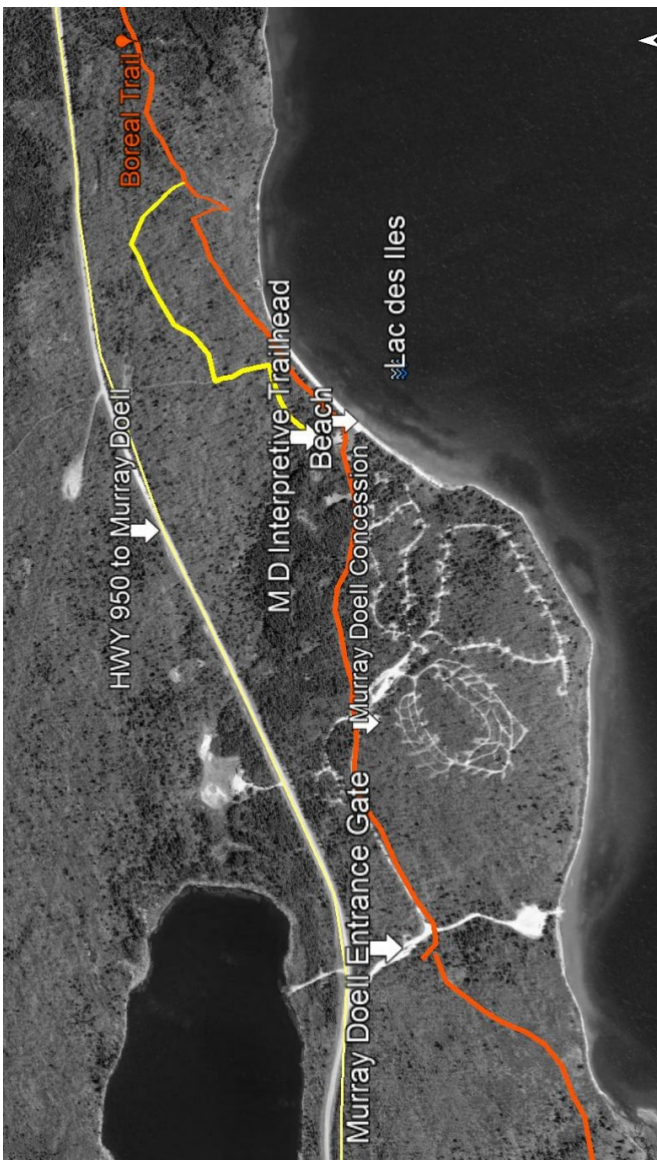
Park Watch: 1-800-667-1788

Tel: 1-306-236-7680

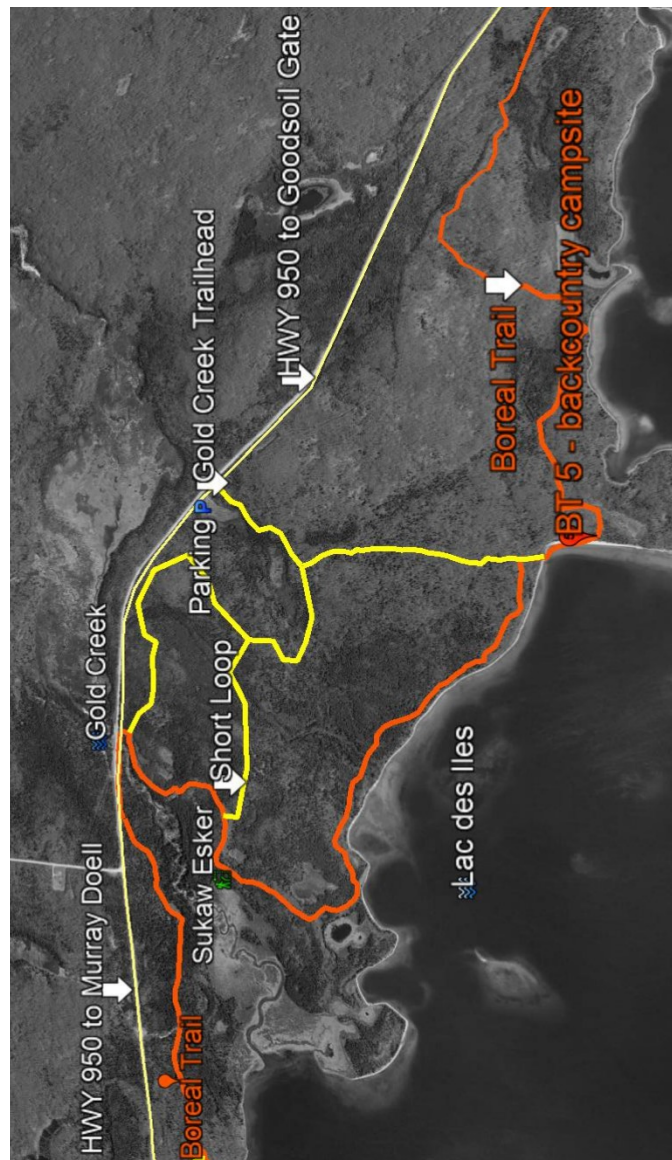
Email: MeadowLake@gov.sk.ca



Interpretive Trail—1.7 KM



Gold Creek Hiking Trail—8 KM



Gold Creek Hiking Trail—6 KM
Short Loop

