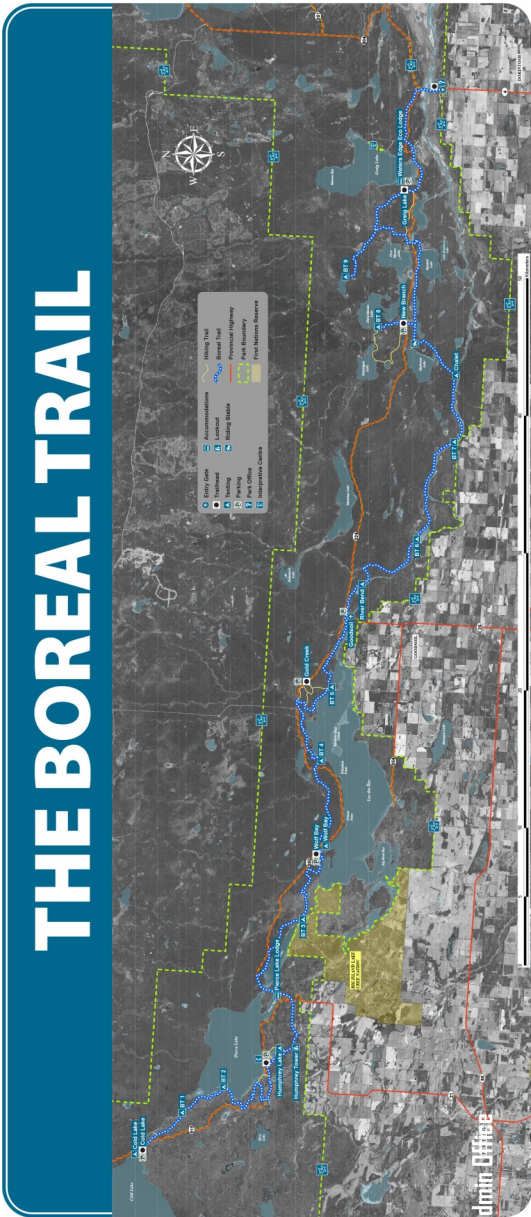


# THE BOREAL TRAIL

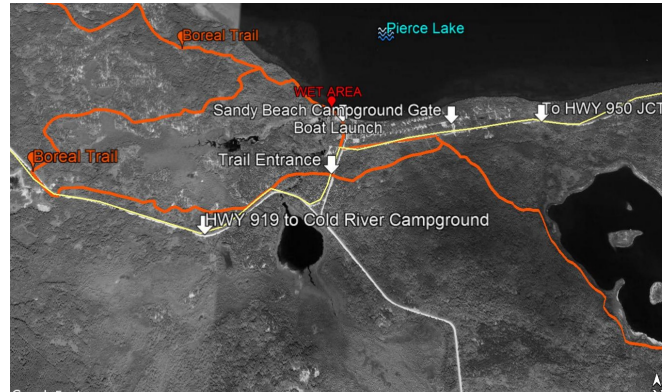
## Boreal Trail



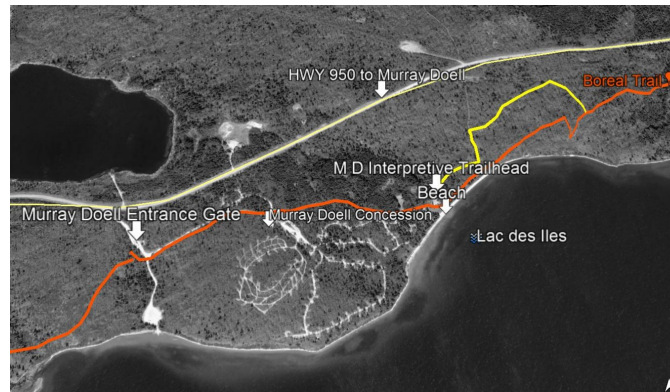
**Park Watch: 1 800 667-1788**  
[saskparks.com](http://saskparks.com)

Map of Parks, Communities and Recreation Services is not responsible for any errors or omissions. All information is subject to change without notice. Review of this & other information is recommended before making any decisions.

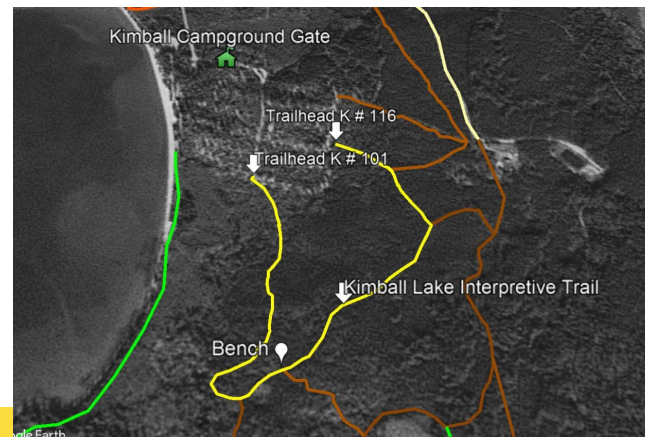
## Sandy Pines—Boreal Trail Loop - 5.2 KM



## Murray Doell—Interpretive Trail—1.7 KM



## Kimball Lake Interpretive Trail—1.5 KM



## Meadow Lake Provincial Park Hiking Trails



Meadow Lake Provincial Park  
[www.saskparks.com](http://www.saskparks.com)  
Park Watch: 1-800-667-1788

Tel: 1-306-236-7680

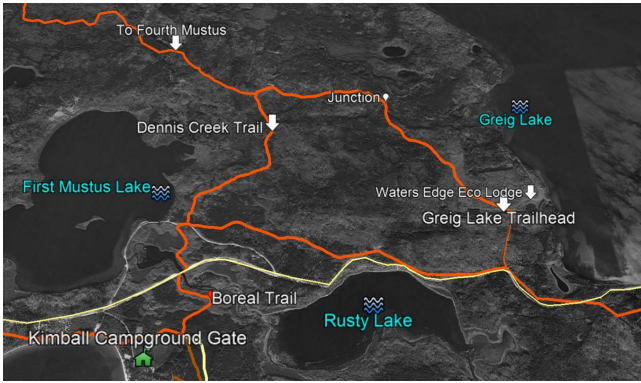
Email: [MeadowLake@gov.sk.ca](mailto:MeadowLake@gov.sk.ca)



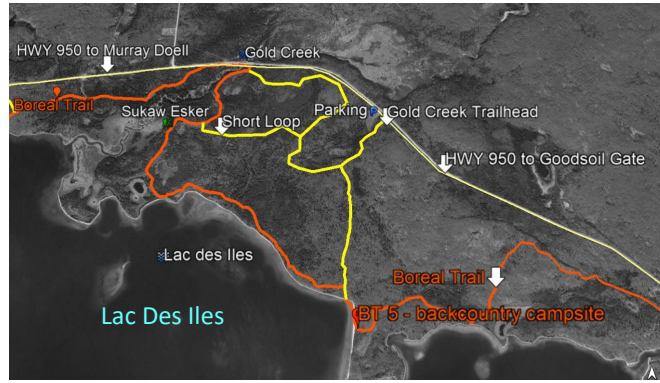
All Hikers Must Check IN/OUT call 1-306-236-7680

Please leave a message if calling outside office hours.

**Dennis Creek Trail—11.4 KM**



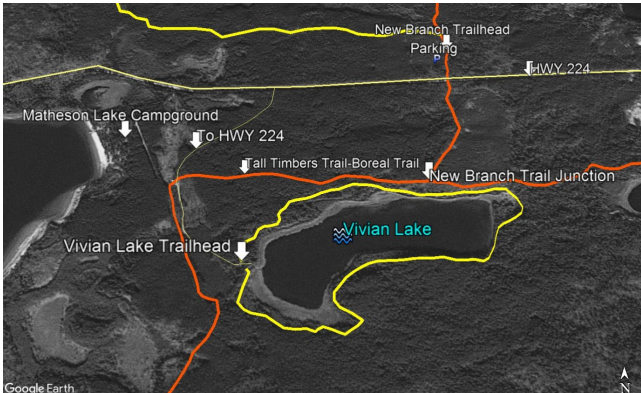
**Gold Creek Trail— 6 KM & 8 KM**



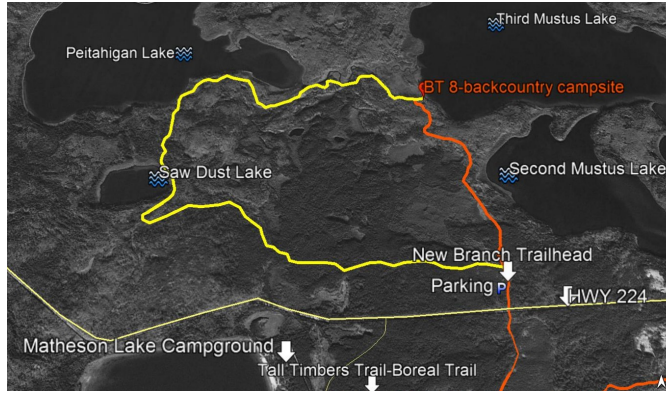
**Haymeadow Trail—Greig Lake - 8 KM**



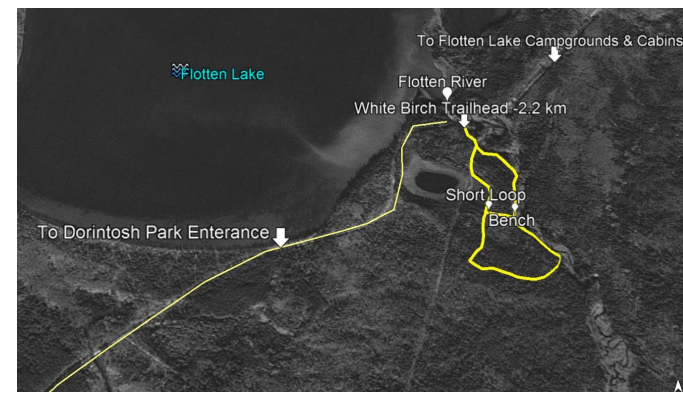
**Vivian Lake Trail— 3.8 KM**



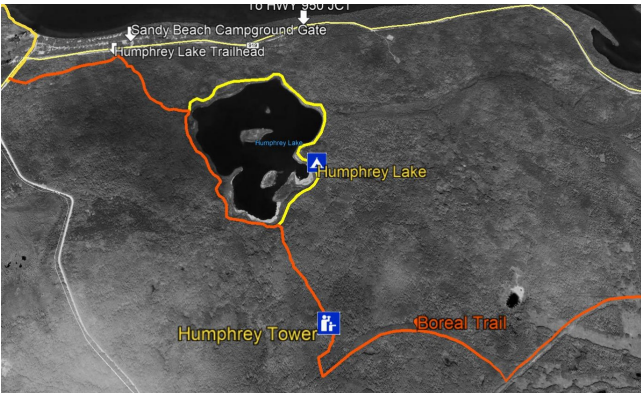
**New Branch Hiking Trail— 10 KM**



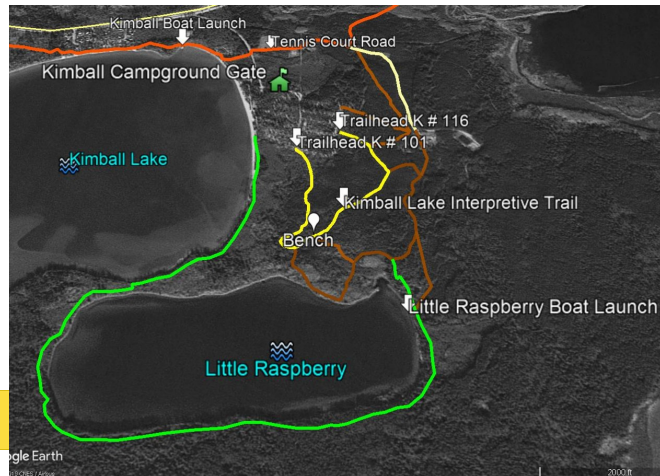
**White Birch Trail—Flotten Lake—2.2 KM**



**Humphrey Lake Trail - 3 KM**



**Kimball Lake—Little Raspberry Trail - 6.3 KM**



**Wolf Bay Trail—Lac Des Iles—3 KM**

